

# 2021 BMIFC Annual Report

Photograph by Todd Pease

## Inside this issue:

BLUE MOUNTAIN INTERAGENCY FIRE CENTER	2
AVIATION — FIXED WING	3
AVIATION — ROTOR WING	4
WASHINGTON DNR	5
BUREAU OF INDIAN AFFAIRS	5
OREGON DEPARTMENT OF FORESTRY	6
UMATILLA NF	7
WALLOWA-WHITMAN NF	8
IHC/WILDLAND FIRE MODULE	9

**BLUE MOUNTAIN INTERAGENCY FIRE CENTER**  
UMATILLA NATIONAL FOREST  
WALLOWA-WHITMAN NATIONAL FOREST  
UMATILLA BUREAU OF INDIAN AFFAIRS  
OREGON DEPARTMENT OF FORESTRY  
SOUTHEAST REGION WASHINGTON DNR



# 2021 BMIFC Annual Report

## Blue Mountain Interagency Dispatch Center

### “Our Mission Is Your Safety”

Blue Mountain Interagency Dispatch Center (BMIDC) kicked off the year exceptionally early with an unseasonable lightning event causing the Joseph Canyon fire (OR-VAD under OR-WWF protection, also burning onto ODF and DNR grounds). Due to drought and unusually high temperatures Joseph Canyon escalated into a T2 project fire.

The Northern Blues zone dominated the footprint for BMIDC this season. Multiple lightning ignitions accounted for 3 more project fires across the zone on July 7th. Respectively they were Dry Gulch (WA-SES), Lick Creek (OR-UMF), and Green Ridge (OR-UMF). These fires burned actively through July, August, and September calling to activate in-person expanded for 48 consecutive days, then moving to virtual as work load provided.

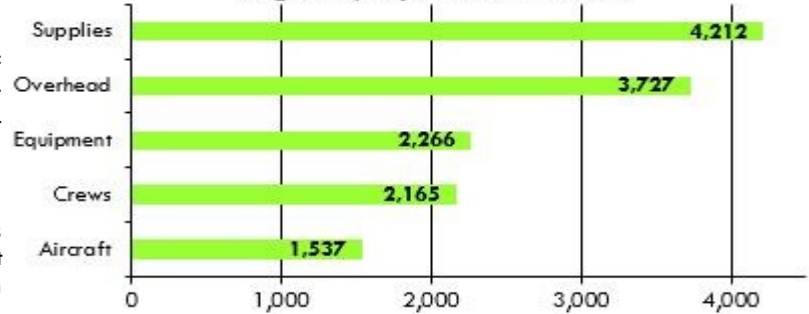
The T3 Team was initially assigned to the Elbow Creek (OR-974S) incident early on, but immediately handed the incident over to ODF T1 Team 3. The T3 team then moved to Green Ridge. The Team ended the season back on Elbow Creek.

2021 still presented challenges with the ongoing pandemic, a steady fire season, and continued hurdles of navigating virtual staffing. Despite circumstance, impeccable coordination and emphasis on safety prevailed.

As always, thank you for the support from the BMIDC Ops group, Board of Directors, Line Officers and the Radio Group. We appreciate your continued support.

We are committed to continue providing excellent service to our users in 2022, where your safety is our mission.

### Logistics/Expanded Workload



Initial Attack	
Wildfire Incidents	226
Search & Rescue	4
Medical Aid	17
Law Enforcement	12
Prescribed Fire	39
Smoke Chases	179
Admin Tracking	3,978
*groups signed out 5/1-10/31	
Night Shifts	80

### Logistics

**IROC Incidents Created:** 599  
(Supported 483 non local incidents)  
**Union IHC:** 14 Assignments  
**La Grande IHC:** 19 Assignments  
**Eagle Cap WFM:** 8 Assignments  
**Type II IA Crews:** WWF - 5/ UMF - 5  
 UMF Vet Suppression Module - 7  
**NEO Type 3 Team:** 3 Assignments  
 Elbow Creek, Green Ridge, Elbow Creek  
**NW Team 9:** Jack Hill (OR-UPF), Middle Fork (OR-WIF), Black Butte (OR-MAF), Cedar Creek (WA-OWF)

## La Grande Fire Interagency Support Cache

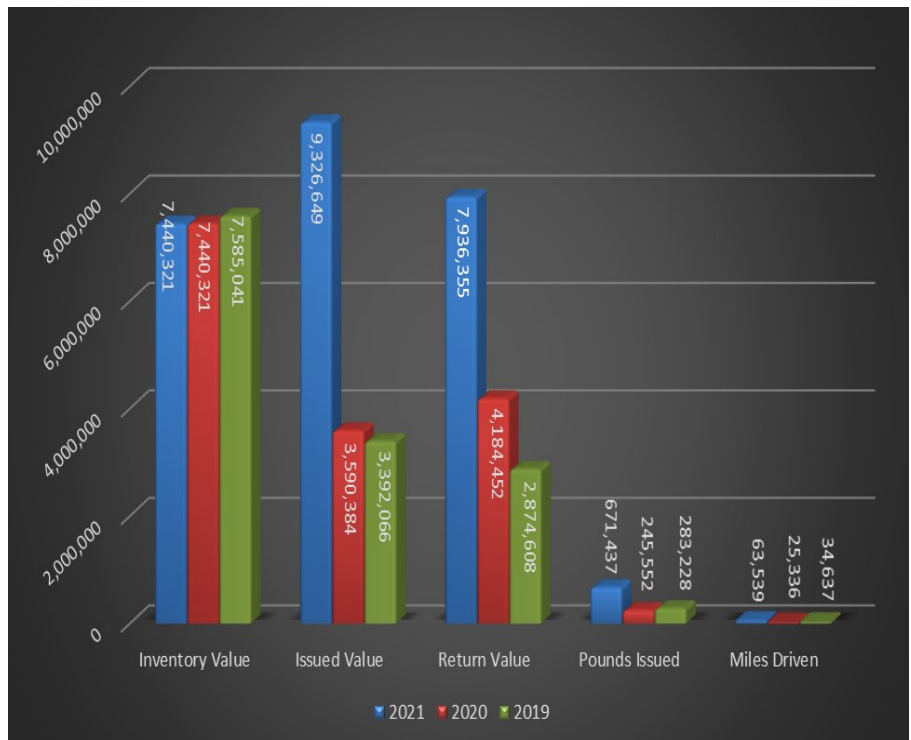
The 2021 season at the La Grande Fire Cache got its kick start in May. Annual kit updates and routine preparation for the 2021 season were the primary focus of the crew.

This year we welcomed 1 new 1039 employee to the cache, Ty Hook. The La Grande Fire Cache employed a total of 11 Administratively Determined (AD) employees, to increase our workforce. AD salaries paid in support of the La Grande Fire Cache totaled approximately \$148,064.00, helping boost the local economy. With the busy season in the Pacific Northwest this year we hosted 1 detailer-Ivan Gallardo from the Great Basin Cache in Boise, ID.

During the 2021 season the La Grande Cache provided \$3,575,462 in support to both Regional and National Caches by shipping and delivering supplies items in support of ongoing incidents. The Cache also provided local support to 3-Type I, 7-Type II, and 7-Type III incidents on the Wallowa-Whitman NF, Umatilla NF, Malheur NF, as well as to the Oregon Department of Forestry. In addition, resource requests for small initial attack incidents kept the crew busy. Cache personnel also assisted with the Region 6 Rappel Academy as well local unit needs for the Oregon Department of Forestry, Washington DNR, local BIA and BLM units.

Utilization of an exclusive use Trucking Service Contract with local trucking companies provides for the direct delivery of logistical support items in support of ongoing incidents for large shipments of supplies and equipment, as well putting money into the local community. Estimated cost for trucking support this year was \$226,620.

Our overall inventory value for 2021 totaled \$7,440,321. The dollar amount issued directly out to incident support for the 2021 fire season was \$9,326,649. Total dollar amount returned from incidents was \$7,936,355. Total miles driven this year in support of incidents, accident free, was 63,539.



# 2021 BMIFC Annual Report

## Interagency Aviation - Fixed Wing



### La Grande Exclusive Use ATGS

#### Air Attack N78NA

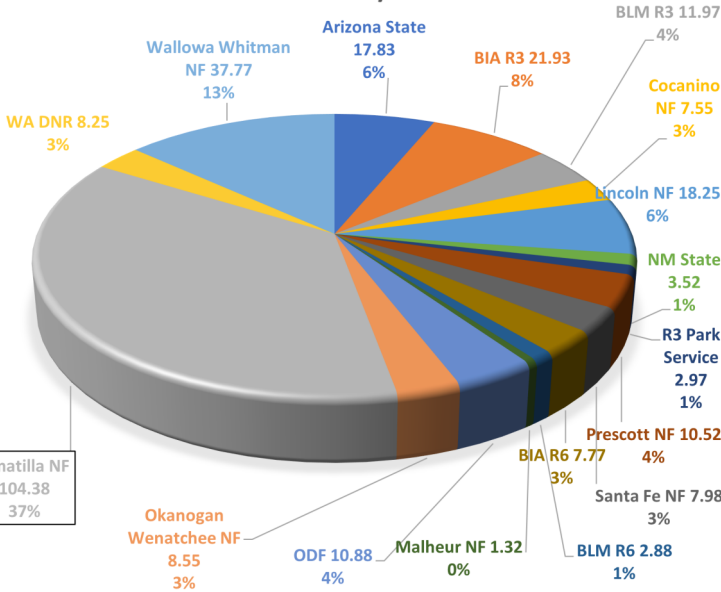
La Grande Air Attack (8NA) began the 2021 season stationed in R3 from April 27th to June, 24th. June 24th, the platform moved back to R6. 8NA finished up the fire season September 30th. 8NA supervised 402 flight hours of helicopters, 496 flight hours of retardant planes, and 26 hours of scoopers.

### ODF Aircraft

#### Detection Plane N60018

018 had a good season with a total of 135.1 flight hours on the BMIDC footprint. 2021 SPA summary shows ODF detection at 153 hours, 018 accounted for 88% of the total.

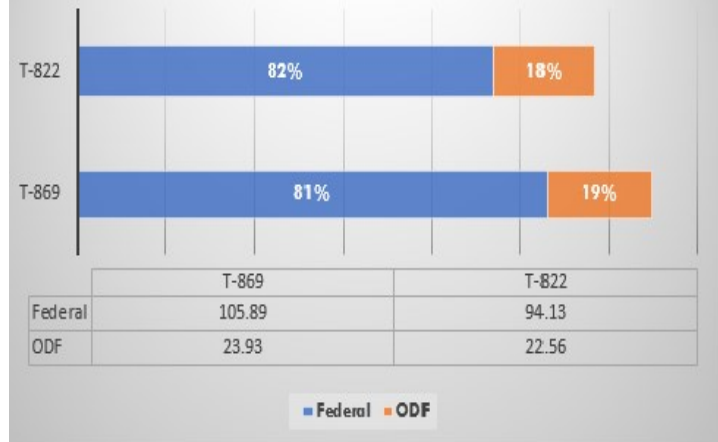
FLIGHT TIME BY AGENCY/REGION AA-8NA



Total Hours Flown: 284/ Total Mission Legs: 99

Flight Stats	T-822	T-869	Totals
Flight Time	116.7	129.8	246.5
Total Number of Flights	30	32	62
Total Gallons of Retardant	80,863	89,466	170,329

T-822/T-869 Flight Time By Agency



### La Grande Air Tanker Base

Cost to Incident	
Retardant Cost	\$1,905,852.20
Flight Time Cost	\$2,506,413.51
Landing Fees	\$24,177
<b>Total Cost</b>	<b>\$4,436,172.71</b>

The La Grande Air Tanker Base provided retardant services and support personnel for safe, fast and efficient loading. ODF funded the SEATs and provided a SEMG. This is a very successful partnership for all agencies within the BMIDC footprint. The tanker base opened for fire support on June 1st, 2021. The tanker base hosts two Oregon Department of Forestry (ODF) contract SEATs. T822 and T869 were hosted this year on a 75 day contract. On June 4th, 2021 the first 28 loads of the season left La Grande on board 3 Large Airtankers (LATS) and 4 Single Engine Airtankers (SEATS) in support of suppression activities on Joseph Canyon fire east of Troy, Oregon. The three biggest days for the tanker base were August 7th with 47 loads for 99,344 gallons of retardant, August 15th with 78,272 gallons of retardant and August 8th with 58,267 gallons of retardant. Last load of the season came from T-162 on the Schneider Springs Fire in WA. 492 missions were flown from the La Grande Tanker Base on 36 different fires. Fires supported with retardant received 315 SEAT loads and 177 Large Air Tanker loads. The tanker base pumped 718,600 total gallons of retardant, costing incidents \$4,436,172 in 2021. The tanker base is a force account base so there are no retardant contract costs. This was La Grande Air Tanker Base's 30th season with out an accident or incident with Large Air Tankers. On the SEATS side there was two incidents, an inadvertent drop and a blown tire.

# 2021 BMIFC Annual Report

## Interagency Aviation – Rotor Wing

### Type 1 Helicopter

#### T1 Limited Helicopter N716HT

On April 28th, 2021, 6HT (The National Type 1 Exclusive-Use helicopter hosted by the WWF) managed by the La Grande Air Base personnel came on contract. 6HT started the season in the Southwest (SW), moving to the Northern Rockies (NR) mid July. Mid August saw 6HT return to Pacific Northwest (PNW). After a short stint in the PNW, the helicopter found itself in California for the remainder of the fire season. 6HT's contract ended 10/20/2021, after 22 days on a contract extension, for a total of 172 days on contract. 6HT had a total flight time of 283.4 hours and delivered 1.7 million gallons of water.



### ODF Aircraft

#### T2 Limited Helicopter N703NP

3NP started the season as an ODF CWN June 4th - June 9th and flew 22 hours on Joseph Canyon and Dry Creek Fires. June 17th - June 30th 3NP flew 26.5 hours on 4 incidents between the USFS and ODF. July 1st - September 30th 3NP flew a total of 109 hours between ODF, USFS/partners. 55.7 hours of flight time was on the Elbow Creek Fire, over half of the 2021 ODF Severity flight time. Also during this time frame 3NP flew on 16 incidents. Totals for the year, 99.8 hours on ODF and 58.1 hours on USFS/partners for 157.9 hours and 22 incidents for the 2021 fire season.



**N404HA** (Bell 205 A1++) was on a 120-day contract in 2021, extending for 7 days. 4HA and crew spent most of the season supporting local incidents close to home. 129.7 total flight hours, 72.4 flight hours were on the home forest of WWF. 4HA and crew supported 23 initial attacks with either rappellers or helitack. Extended attack fire supports were 6 fires for 11 days. 4HA's contract ended October 6th, for a total of 127 days.

Statistics	4HA	3HT
Flight Time on Home Unit:	72.4	6.5
Flight Time off Forest:	47.6	166.1
Initial Attack Flight Time:	76	50.5
Extended Attack Flight Time:	28	106.8
Project/Training Flight Time:	16	15.3
Non-Federal Flight Time:	9.7	19.1
Total Flight Time:	129.7	193.2
Rappel Fires:	11	2
Helitack Fires:	12	10
Number of Operational Rappels:	40	8
Gallons of Water Delivered:	27,920	238,204

**N223HT** (Bell 205 A1++) was on a 120-day contract in 2021, extending for 14 days. The helicopter and crew started the season on May 15th. After supporting the Rappel Academy in OR, the helicopter spent most of the rest of the summer in CA supporting initial and extended attack. 3HT had 8 operational rappels on two initial attack fires. Fire season ended September 11th in CA after 134 days on contract.



# 2021 BMIFC Annual Report

## Washington Department of Natural Resources

2021 Fires	Number of Fires	Acres Burned
Lightning	5	24,706.70
Human	7	5.8
<b>Totals</b>	<b>12</b>	<b>24,710.50</b>

Incidents	Ignition Date	Acres	Cause
Dry Gulch	7/7/2021	24,706	Lightning
Lick Creek	7/7/2021	1,191	Lightning
Harlow Ridge	5/30/2021	3.00	Human
Inc. 194	4/28/2021	1.00	Human
Bennett Ridge	6/7/2021	1.00	Human
Sheep Creek	8/6/2021	1.00	Lightning
Hewitt Spring	5/13/2021	0.50	Human
Hog Eye	7/4/2021	0.50	Lightning

## Umatilla Agency, Bureau of Indian Affairs

2021 Fires	Number of Fires	Acres Burned
Lightning	1	.1
Human	23	62.4
<b>Totals</b>	<b>24</b>	<b>62.5</b>



Incident	Acres	Ignition Date	Cause
Goad Best	37.70	2/10/2021	H
Kanine	10.90	3/10/2021	H
Birch Creek	4.00	6/3/2021	H
Tias	3.00	1/19/2021	H
Kash Kash	2.03	4/28/2021	H
Umatilla River	2.00	3/1/2021	H
Tumbleweed	1.00	3/27/2021	H
Marlow	0.30	6/14/2021	H
Tumbleweed Drift	0.25	11/15/2021	H
William Lane	0.10	1/13/2021	H
Short Mile	0.10	2/1/2021	H
North Cayuse	0.10	2/10/2021	H

Incident	Acres	Ignition Date	Cause
Snowy	0.10	2/11/2021	H
Casino #1	0.10	3/6/2021	H
Ring	0.10	6/2/2021	H
Dozer	0.10	6/27/2021	H
Log Fire	0.10	7/31/2021	H
Jennings Creek	0.10	8/6/2021	L
Trail	0.10	8/16/2021	H
46 Mission	0.10	9/8/2021	H
1267	0.10	9/8/2021	H
Exit 216 A	0.10	9/9/2021	H
Hawthorn	0.10	10/3/2021	H
PFD	0.10	10/19/2021	H

# 2021 BMIFC Annual Report

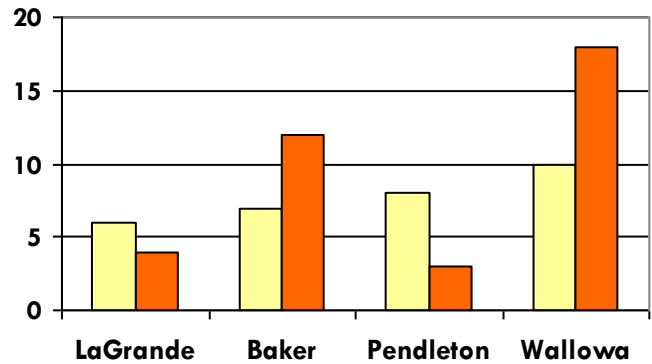


## Oregon Department of Forestry

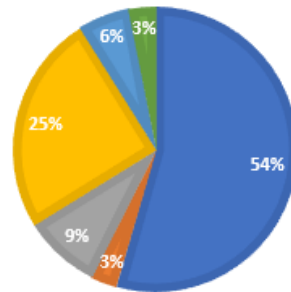
### Significant or Large Incidents

Fire	Ignition Date	Acres	Cause
Middle Point	3/27	13.9	H
Ebell	4/12	31	H
Joseph Canyon	6/4	3,602	L
Bone Canyon	6/13	67.43	L
Gov. Mountain	7/11	5.6	H
Elbow Creek	7/15	14,271	H
Wise	8/5	132	L
Saw Dust Pile	8/5	9.2	L
Maxville	8/5	5	L

### Fires by Cause



### GENERAL CAUSE

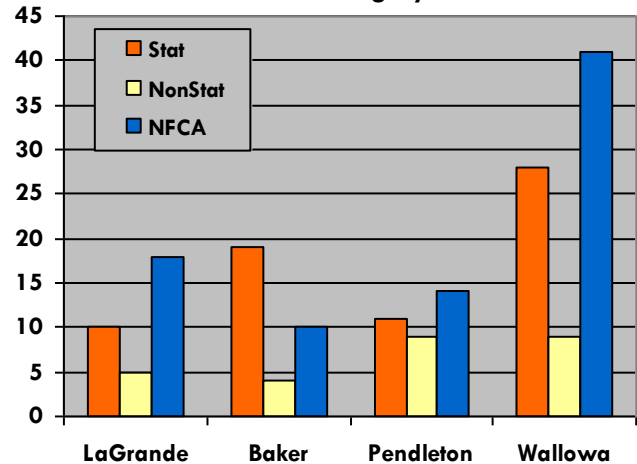


- 2021 was below for number of stat fires and above average on acreage burnt for the season.
- 91% of all fires were caught at 10 acres or less.

### Ten Year Average

Year	# Of Fires	Acreage
2021	68	18,170
2020	76	337
2019	75	486
2018	78	1,466
2017	59	636
2016	44	873
2015	85	53,780
2014	106	1,038
2013	106	315
2012	46	4,076
<b>Average</b>	<b>74</b>	<b>8,118</b>

### Category



# 2021 BMIFC Annual Report

## Umatilla National Forest

Unit	Fires	Acres
Heppner	5	112.5
Pomeroy	16	98,197
N.F. John Day	21	4.1
Walla Walla	16	6,087.3
<b>TOTAL</b>	<b>58</b>	<b>104,400.8</b>

### SIGNIFICANT OR LARGE INCIDENTS:

Dry Gulch	7/7
Green Ridge	7/7
Lick Creek	7/7
Elbow Creek	7/15

### THE FOREST ASSEMBLED 5 TYPE II IA CREWS:

**UMF#1** - Lovelett Corral (OR-UMF), Upton (OR-BUD), Batterman Rd (WA-WFS), Burbank (WA-MCR)

**UMF#2** - Umatilla NF Misc ABC (OR-UMF)

**UMF#3** - Umatilla NF Misc ABC, Green Ridge (OR-UMF)

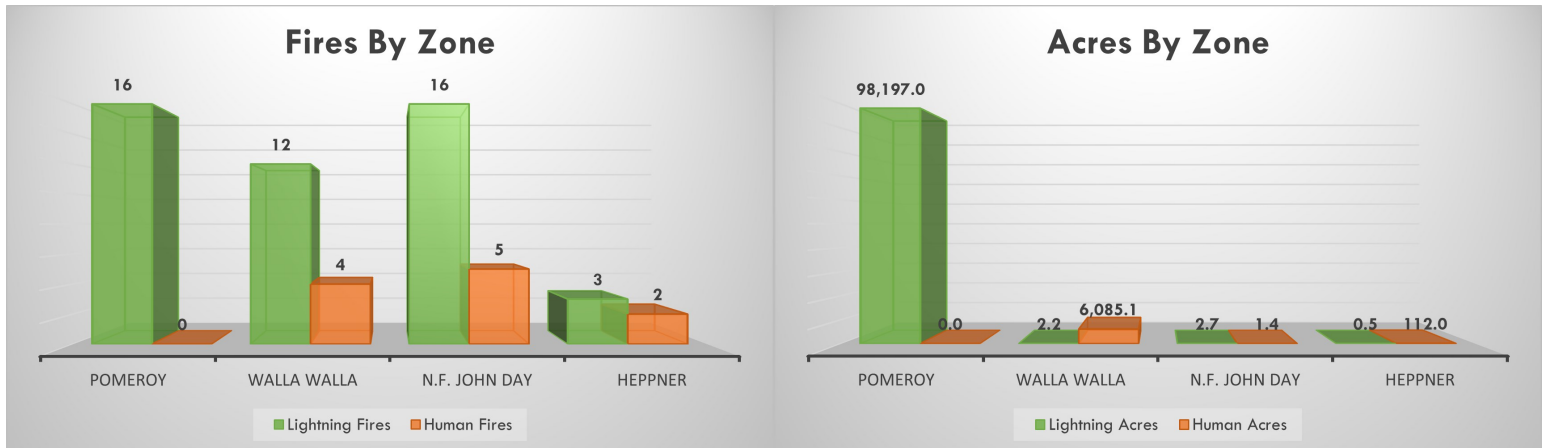
**UMF#4** - Umatilla NF Misc ABC (OR-UMF), Rock Creek (OR-WWF)

**UMF#5** - Umatilla NF Misc ABC (OR-UMF)

Fuels Program	
Jackpot/Landscape	564
Pile Burning	3,676
<b>Total</b>	<b>4,240</b>
Wildfire that Burned Planned Treatment	27,470
Mechanical Treatments	14,741

### UMATILLA VETERAN CREW/SUPPRESSION MODULE:

MOCCA SUPPORT (MO-MTF), BONE CANYON (OR-UMF), UMATILLA NF MISC ABC (OR-UMF), GREEN RIDGE (OR-UMF), DEVILS KNOB (OR-UMF)



Year	Number of Lightning Starts	Lightning Acres	Number of Human Starts	Human Acres	Total Number of Starts	Total Number Of Acres
2011	61	114	8	73	69	187
2012	36	8	11	8	47	16
2013	94	1,429	10	13	104	1,442
2014	75	7,231	7	1	82	7,232
2015	83	71,623	16	2,265	99	73,888
2016	12	205	10	48	22	253
2017	49	134	16	185	65	319
2018	29	1,056	13	414	42	1,470
2019	68	6190	17	164	85	6354
2020	79	1,039	7	39	75	1,078
2021	47	98,202	11	6,199	58	104,401
<b>10 yr. avg.</b>	<b>58</b>	<b>17,021</b>	<b>11</b>	<b>855</b>	<b>68</b>	<b>17,876</b>

# 2021 BMIFC Annual Report

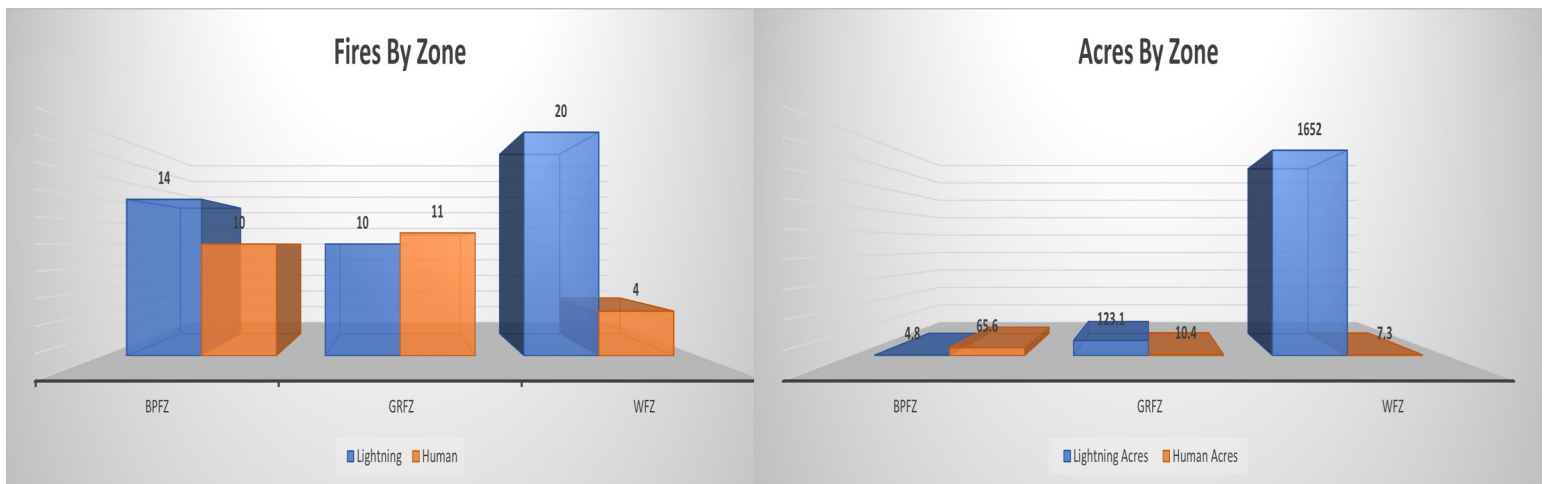
## Wallowa-Whitman National Forest

Unit	Fires	Acres
Burnt Powder Fire Zone	24	70
Wallowa Fire Zone	21	123
Grande Ronde Fire Zone	24	1,659
<b>TOTAL</b>	<b>69</b>	<b>1,863</b>

**THE FOREST ASSEMBLED 5 TYPE II IA CREWS:**  
**WWF#1** - Lovelett Corral (OR-UMF), Upton (OR-BUD), Weihl Ridge (WA-SES), Batterman Rd (WA-WFS), Burbank 9WA-MCR)  
**WWF#2** - WWF NF Misc ABC (OR-WWF)  
**WWF#3** - WWF NF Misc ABC (OR-WWF)  
**WWF#4** - Bull Complex (OR-MHF)  
**WWF#5** - Windy (CA-TIA)

**LA GRANDE IHC** - 21 ASSIGNMENTS  
**UNION IHC** - 15 ASSIGNMENTS  
**EAGLE CAP WFM** - 8 ASSIGNMENTS

Fuels Program	
Hazardous Fuels Reduction	Acres
RX Fire	4,384
Pile Burning	3,719
Fire for Resource Benefit	4,325
Timber Slash Disposal (BDBD)	Acres
Landing Piles	977
Broadcast Burning	0

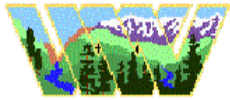


Year	Number of Lightning Starts	Lightning Acres	Number of Human Starts	Human Acres	Total Number of Starts	Total Number of Acres
2012	42	70,678	40	60	82	70,738
2013	124	860	16	69	140	929
2014	99	55,575	15	339	114	55,914
2015	63	42,687	23	7,561	86	50,248
2016	33	30	29	28,584	62	28,614
2017	91	4,317	20	182	111	4,498
2018	26	17	13	5	39	22
2019	67	5,706	26	27	93	5,733
2020	60	21	23	12	83	33
2021	44	1,780	25	83	69	1,863
<b>10 yr. avg.</b>	<b>65</b>	<b>18,167</b>	<b>23</b>	<b>3,692</b>	<b>88</b>	<b>21,859</b>



# 2021 BMIFC Annual Report

## Interagency Hotshot Crews



### LA GRANDE HOTSHOTS



La Grande IHC started the season at the end of April with an RX assignment to Central OR, followed by a short stint on a wild-fire. May saw the crew in MN for the majority of the month. June was spent in the Great Basin (GB). The end of June through the rest of the season the crew returned to the Pacific Northwest (PNW), assisting with fires in OR and WA. The crew disbanded on 9/25, for a total of 167 days together.



Total days crew was assembled	167
Start Date	4/12
End Date	9/25
Total number of days assigned to incidents	111
How many days were in official travel	18
How many 14 day tours were completed during total number of days assigned	8
Number of days on project work while assigned (list specific type: e.g.. Trails, fuels etc.)	9
Total number of days off	29
Days off in pay status	13
Days off in non- pay status	16
Number of days in training	8

## Wildland Fire Module



The Wildland Fire Module started out the season supporting R9 RX. We sent 2 mods of up to 4 personnel in March and April. Critical Training was completed with the core group and 1039's that were available May 10th. The module either supported or managed multiple large fires including Dry Creek, Green Ridge, Elbow (x2), Rock Creek and Summit Trail fires. We responded to 40 wildland fire incidents throughout the season.



### Union Hotshots



Union IHC started the season at the end of May with an assignment to the Southwest (SW). Middle of June saw a return to the Pacific Northwest (PNW), where the crew remained for the rest of the season. Supporting incidents in OR. The crews season ended 10/9 for a total of 168 days together.



Total days crew was assembled	168
Start Date	4/26
End Date	10/9
Total number of days assigned to incidents <b>(Includes travel)</b>	112
How many days were in official travel status	9
How many 14 day tours were completed during total number of days assigned	8
Number of days on project work while assigned (list specific type: e.g.. Trails, fuels etc.)	6
Total number of days off	19
Days off in pay status	13
Days off in non- pay status	6
Number of days in training	8

Total days crew was assembled	180
Start Date	5/10
End Date	11/19
Total number of days assigned to incidents <b>(Includes travel)</b>	90
How many days were in official travel status	22
How many 14 day tours were completed during total number of days assigned	8
Number of days on project work while assigned (list specific type: e.g.. Trails, fuels etc.)	10
Total number of days off	40
Days off in pay status	9
Days off in non- pay status	31
Number of days in training	30